



Silver/Gold/Rose Gold Stainless Steel Connector for MIM Powder Metallurgy Watch Strap

Our Product Introduction

for more products please visit us on mimmetalparts.com

Basic Information

- Place of Origin: Guangdong, China
- Brand Name: MDM
- Minimum Order Quantity: 1000 units
- Price: \$0.35/units >=1000 units

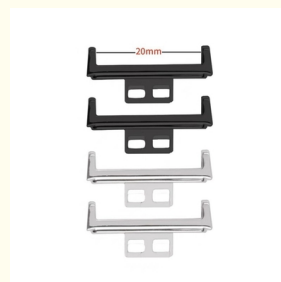
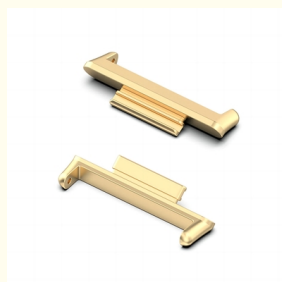
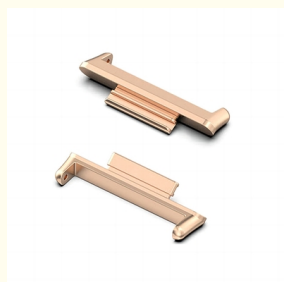


Product Specification

- Condition: New
- Type: Machining Parts
- Spare Parts Type: OEM
- Video Outgoing-inspection: Provided
- Machinery Test Report: Provided
- Marketing Type: Hot Product
- Material: Stainless Steel, Stainless Steel
- Plating: Silver
- Warranty: 2 Years
- Key Selling Points: Competitive Price
- Weight (KG): 0.05 KG
- Applicable Industries: Building Material Shops, Machinery Repair Shops, Manufacturing Plant, Food & Beverage Factory, Farms, Construction Works, Energy & Mining, Food & Beverage Shops, Other



More Images



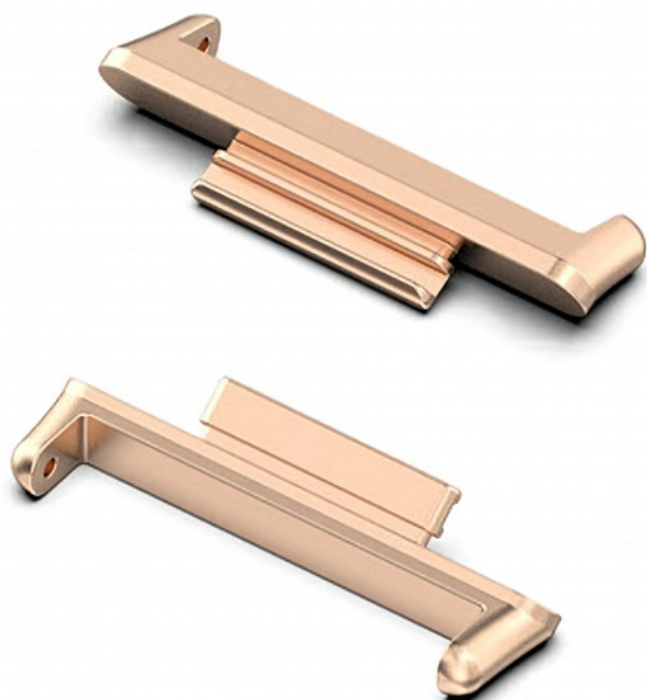
Product Description

Product Description



Our Product Introduction

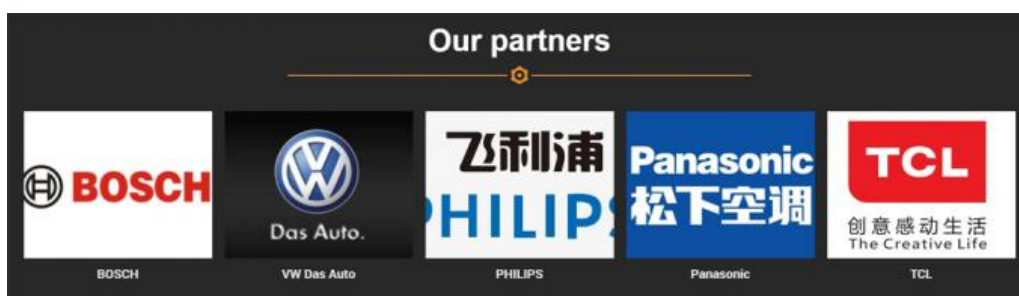
for more products please visit us on mimmetalparts.com







[Send an inquiry](#)



Specification

item	value
Place of Origin	China
	Guangdong
Type	Machining Parts
Spare Parts Type	OEM
Video outgoing-inspection	Provided
Machinery Test Report	Provided
Marketing Type	Hot Product
Warranty	2 years
Key Selling Points	Competitive Price

Weight (KG)	0.05KG
Applicable Industries	Building Material Shops, Machinery Repair Shops, Manufacturing Plant, Food & Beverage Factory, Farms, Construction works , Energy & Mining, Food & Beverage Shops, Other
Local Service Location	None
Showroom Location	None
Brand Name	MDM
Condition	New
Material	Stainless steel
Plating	silver
Material	Stainless steel
Brand	MDM
Color	Silver/Gold/Rose gold/More
Size	20MM
Weight	3g
Use	Watch
Powder pretreatment	Powder annealing
Product type	Hardware parts
Forming method	Powder injection molding
Mold material	Steel mould

Packing & Delivery



To better ensure the safety of your goods, professional, environmentally friendly, convenient and efficient packaging services will be provided.

Company Profile





Dongguan Minda Metal Technology Co., Ltd. Was founded in 2015. We specialize in producing MIM parts, PM part, CNC machining parts and Aluminum alloy, Magnesium alloy and Zinc alloy die casting parts. At the same time we also undertake the corresponding product mold design and development and production.

Our professional sales staff will communicate and understand the needs of customers in a timely manner and convey to the technical staff, and the general manager will quickly give the quotation scheme suitable for the product.

In the production process, we will check the quality of products at any time. The product will be fully inspected before shipment to ensure that none of the defective products reach the customer's hands. You have the right needs and we have the right expertise, for hardware accessories solutions please feel free to contact us, we are there for you 7x24h.

FAQ

1. who are we?

We are based in Guanggong, China, start from 2021, sell to Northern Europe(50.00%), North America(30.00%), Mid East(20.00%). There are total about 1-4 people in our office.

2. how can we guarantee quality?

Always a pre-production sample before mass production;
Always final Inspection before shipment;

3. what can you buy from us?

Custom Fasteners Parts, Custom Gear Wheels, Custom Hinges, Custom Bushings, Custom Lock Cylinder

4. why should you buy from us not from other suppliers?

We have 15 years of R&D experience with precision metal parts. We take the quality issue very seriously, all the parts are fully inspected before shipping. We do business with reputation, and will solve the problems of after-sales fast and positively.

5. what services can we provide?

Accepted Delivery Terms: FOB, EXW
Accepted Payment Currency: USD, EUR, CNY;
Accepted Payment Type: T/T, MoneyGram, PayPal, Western Union;
Language Spoken: English, Chinese, German, French



Dongguan Minda Metal Technology Co., Ltd.



18576652101



530960814@qq.com



mimmetalparts.com

RM 1306, NO.249, Zhen'an Road East, Chang'an Twon, Dongguan City, China. 523859